

# Blue Sky

BY LAUNDRY BASKET QUILTS



Stargazer Quilt  
designed by:  
Edyta Sitar

Quilt Size: 72" x 72"

[andoverfabrics.com](http://andoverfabrics.com)




## About Blue Sky

Our beautiful new collection Blue Sky offers an amazing selection of blue in a variety of prints. No matter what you decide to make from Blue Sky fabrics, they will bring a soothing comfort to your home. Dark and rich, soft and dreamy, and light as a cloud, with an accent of gold like the rays of the sun. Blue Skies ahead, prepare yourself for some great fabric weather! - Edyta Sitar

makower uk

Unit 14, Cordwallis Business Park, Clivemont Road,  
Maidenhead, Berkshire SL6 7BU +44(0)1628 509640  
[sales@makoweruk.com](mailto:sales@makoweruk.com) [www.makoweruk.com](http://www.makoweruk.com)

 andover

17/02/17

# Stargazer Quilt



Introducing Andover Fabrics new collection: BLUE SKY by Laundry Basket Quilts  
 Quilt designed by Edyta Sitar

Quilt finishes 72" x 72"  
 4 Blocks: 36" x 36"

*This graphic star quilt is suitable for quilters with little experience or for anyone who wants to make a beautiful wall quilt that packs a punch. The oversize blocks are easy to make, and the placement of light, medium and dark prints adds secondary, unexpected designs. What exactly is the block? The large patches are the perfect place to show off the small and large scale prints.*

## Cutting Directions

Read assembly directions before cutting patches.  
 All measurements are cut sizes and include ¼" seam allowances.  
 WOF designates the width of the fabric from selvage to selvage (approximately 42").

## Fabric Requirements

| Fabric | Number           | Yardage  | 10" squares |
|--------|------------------|--|-------------|
| 8505-B | 1                | 30cm x 56cm  | 2           |
| 8505-L | 2                | 60cm x 115cm                                       | 5           |
| 8506-B | 3                | 30cm x 56cm  | 2           |
| 8507-B | 4                | 30cm x 56cm  | 1           |
| 8515-B | 5                | 30cm x 56cm  | 2           |
| 8505-W | 6                | 30cm x 56cm  | 2           |
| 8515-L | 8                | 60cm x 115cm                                       | 5           |
| 8515-W | 9                | 30cm x 56cm  | 2           |
| 8508-B | 10               | 30cm x 56cm  | 2           |
| 8508-L | 11               | 30cm x 115cm                                       | 4           |
| 8509-B | 12               | 30cm x 56cm  | 2           |
| 8509-L | 13               | 30cm x 56cm  | 1           |
| 8510-W | 14               | 30cm x 56cm  | 2           |
| 8511-B | 15               | 30cm x 56cm  | 2           |
| 8511-L | 16               | 30cm x 115cm                                       | 4           |
| 8511-W | 17               | 30cm x 56cm  | 2           |
| 8512-L | 18               | 30cm x 56cm  | 2           |
| 8512-W | 19               | 30cm x 115cm                                       | 4           |
| 8513-L | 20               | 60cm x 115cm                                       | 7           |
| 8513-W | 21               | 30cm x 56cm  | 2           |
| 8514-L | 22               | 60cm x 115cm                                       | 5           |
| 8514-W | 23               | 30cm x 56cm  | 2           |
| 8506-W | 7                | 80cm x 115cm<br>Binding: 8 strips each<br>2½" wide | 2           |
| 8507-N | 4 metres Backing |  |             |

## Fabric Combinations

Unless stated, make one of each of the following combinations.

| Light/Light Squares - 12 needed                                   |       |       |       |       |                      |       |
|---|-------|-------|-------|-------|----------------------|-------|
| 8/19 x 2 (4 corner squares)                                       | 20/22 | 8/20  | 16/20 | 18/22 |                      |       |
| Light/Dark Squares - 52 needed Follow Quilt Diagram for placement |       |       |       |       |                      |       |
| 1/11  | 1/16  | 2/6   | 2/12  | 2/21  | 2/23 x 2 (4 squares) |       |
| 3/20  | 3/22  | 4/20  | 5/10  | 5/11  | 6/16                 | 7/10  |
| 7/22  | 8/15  | 8/17  | 9/19  | 9/20  | 11/13                | 11/17 |
| 12/18   | 14/19 | 14/22 | 15/20 | 16/21 |                      |       |

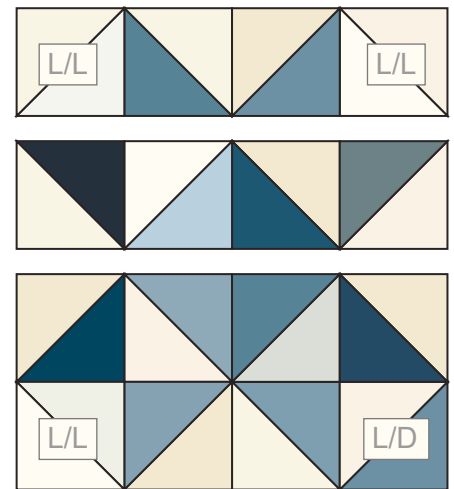
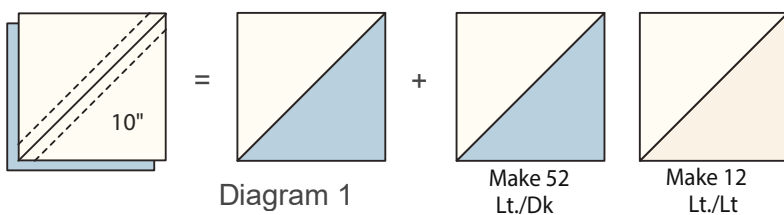
# Stargazer Quilt

## TIPS:

- When sewing the diagonal seams it is recommended that you sew a scant  $\frac{1}{4}$ ".
- PRESS the seams, don't iron them with a stroking movement as you might stretch the seam.
- You will need 52 Light/Dark squares and 12 Light/Light squares.

## Making the Quilt

1. The blocks are half-square-triangles (HST) that finish 9" square. Use the following method. Draw a diagonal line on the wrong side of each light 10" square with a sharp pencil (Diagram 1). Place a marked square on a dark square, right sides together. Sew a  $\frac{1}{4}$ " seam either side of the pencil line; cut apart along the pencil line. Open and press to make 2 HSTs. Trim the HST squares to  $9\frac{1}{2}$ ". (Diagram 1)

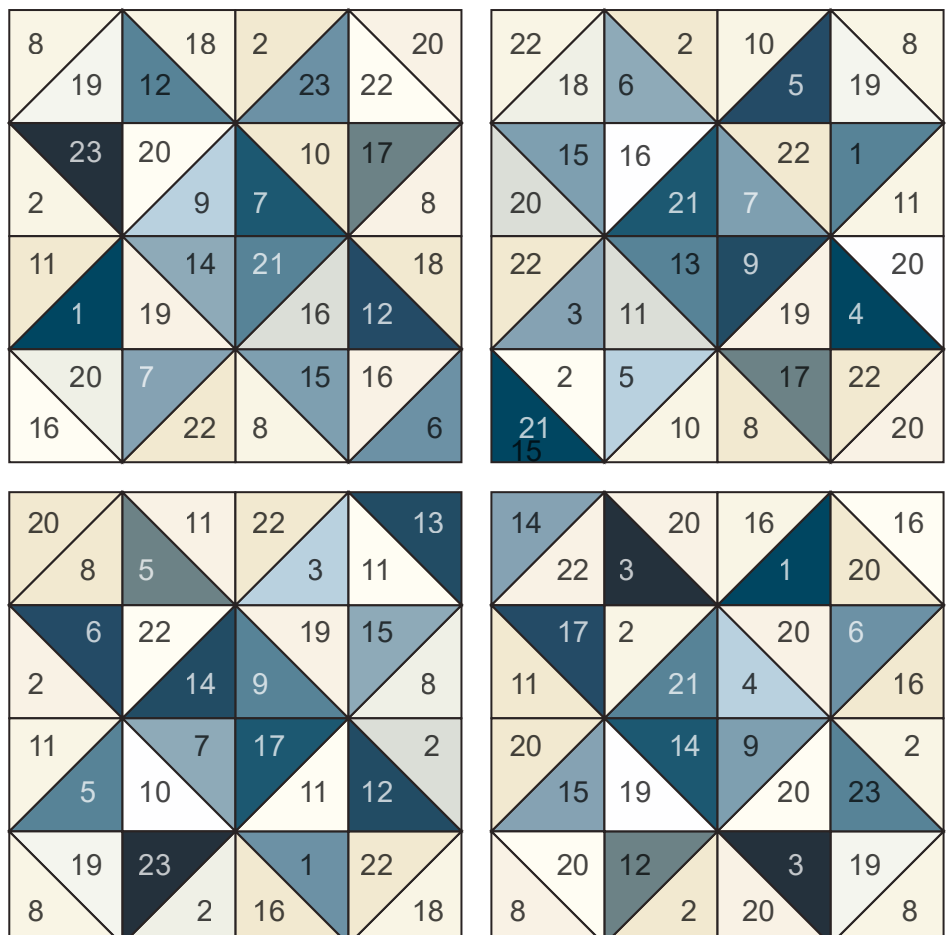


Block - make 4

2. Referring to the block diagram, join 13 Light/Dark HSTs with 3 Light/Light HSTs into 4 rows being careful to rotate the HSTs as shown so that the star is formed.
3. Refer to the Quilt Diagram to join the 4 blocks being sure that the dark triangles touch in the centre of the quilt.

## Finishing the Quilt

4. Layer the quilt with batting and backing and baste. Quilt in the ditch around the block patches. Quilt as you fancy or in an overall pattern.
5. Bind to finish the quilt.



Quilt Diagram





2/8505 L Lilacs



2/8505 B Lilacs



2/8505 W Lilacs



2/8505 N Lilacs



2/8506 W Cloud Nine



2/8506 B Cloud Nine



2/8511 B Windswept



2/8509 B Meadow



2/8507 B Sweetheart



2/8515 B Bubbles



2/8511 W Windswept



2/8509 L Meadow



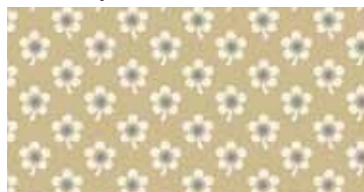
2/8507 W Sweetheart



2/8515 W Bubbles



2/8511 N Windswept



2/8510 N Daisy



2/8507 N Sweetheart



2/8515 L Bubbles



2/8511 L Windswept



2/8510 W Daisy



2/8514 W Rustic Gate



2/8514 L Rustic Gate



2/8513 L BREEZE



2/8513 W BREEZE



2/8508 L Canopy



2/8508 B Canopy



2/8512 L Midnight Bloom



2/8512 W Midnight Bloom



Stargazer Quilt by Edyta Sitar

Finished size 72" x 72" (183 x 183cms)

Download free instructions from www.makoweruk.com